

samQ License Optimizer for SAP

iOCO

VOQUZ
Labs



You may have so many questions regarding SAP licensing...

- Which employees use which SAP applications?
- Do they have the correct user license for it?
- How many licenses are there in the company overall, and how many would be needed?
- Is SAP data used indirectly by third-party or homegrown applications?

samQ License Optimizer for SAP creates transparency and grants user licenses automatically and dynamically, based on actual usage of SAP systems.

License management can be that easy!

Complex Requirements for SAP License Management



Every company that deploys SAP software is only permitted to use it in accordance with contractual provisions. However, there are different licensing metrics and licensing conditions for different SAP products. In some cases, they are very vague or completely undefined.

In addition, there are also individually negotiated agreements, software updates and upgrades, and changes to SAP's Terms & Conditions, which have to be taken into consideration for SAP license management.

SAP system measurement

Are you paying too much?



Companies have to measure their systems once a year to ensure they are using SAP products correctly. They do this on their own, based on SAP guidelines, and then submit the results to the software manufacturer. On this subject, SAP writes:

“To be able to measure all the users of your SAP systems uniquely and precisely, you have to classify your users prior to every system measurement based on their actual usage and the underlying price lists with the corresponding contractual user type.”*

This poses a major challenge for companies with a large number of SAP users and a complex SAP landscape with multiple production systems. Reliable usage data has to be collected in order to assign the optimal license to every SAP user at any time.



Figure 1: Management reports in the samQ Fiori dashboard

However, this requires a level of effort in terms of personnel, time and money that cannot be met when done manually. To ensure compliance and avoid under-licensing, SAP customers therefore usually grant licenses based on authorizations. Consequently, users often receive a maximum license rather than a cheaper one that fits their usage behavior much better. This results in unnecessary additional costs for licenses and maintenance due to over-licensing.

Non-compliance and under-licensing

Another major financial and legal risk is posed by under-licensing. In this case, a user's actual usage exceeds the scope authorized by their license. SAP may therefore demand additional payments or the purchase of additional licenses, a situation that may involve legal proceedings. But in many cases, there is no need to buy additional licenses. Sometimes it is enough to redistribute or reclassify users in order to free up enough licenses and put them to a different use. However, the results of the SAP system measurement do not reveal this potential.

With the help of samQ License Optimizer for SAP, customers can detect these situations and classify users based on their actual usage. This results in a more efficient use of existing licenses, adherence of compliance guidelines, and cost optimization for license purchases and maintenance. Without a tool, it is impossible to achieve this.



The Smartest Solution: samQ

By optimizing your SAP license inventory with samQ License Optimizer, you can guarantee permanent, ideal distribution of the existing license inventory based on actual usage. The tool collects reliable data on users' usage behavior, and analyzes and evaluates it based on a transaction database with optimized license types. The result is a permanently optimized SAP landscape. This means that complex preparations for the SAP system measurement belong to the past. License audits become transparent and verifiable.

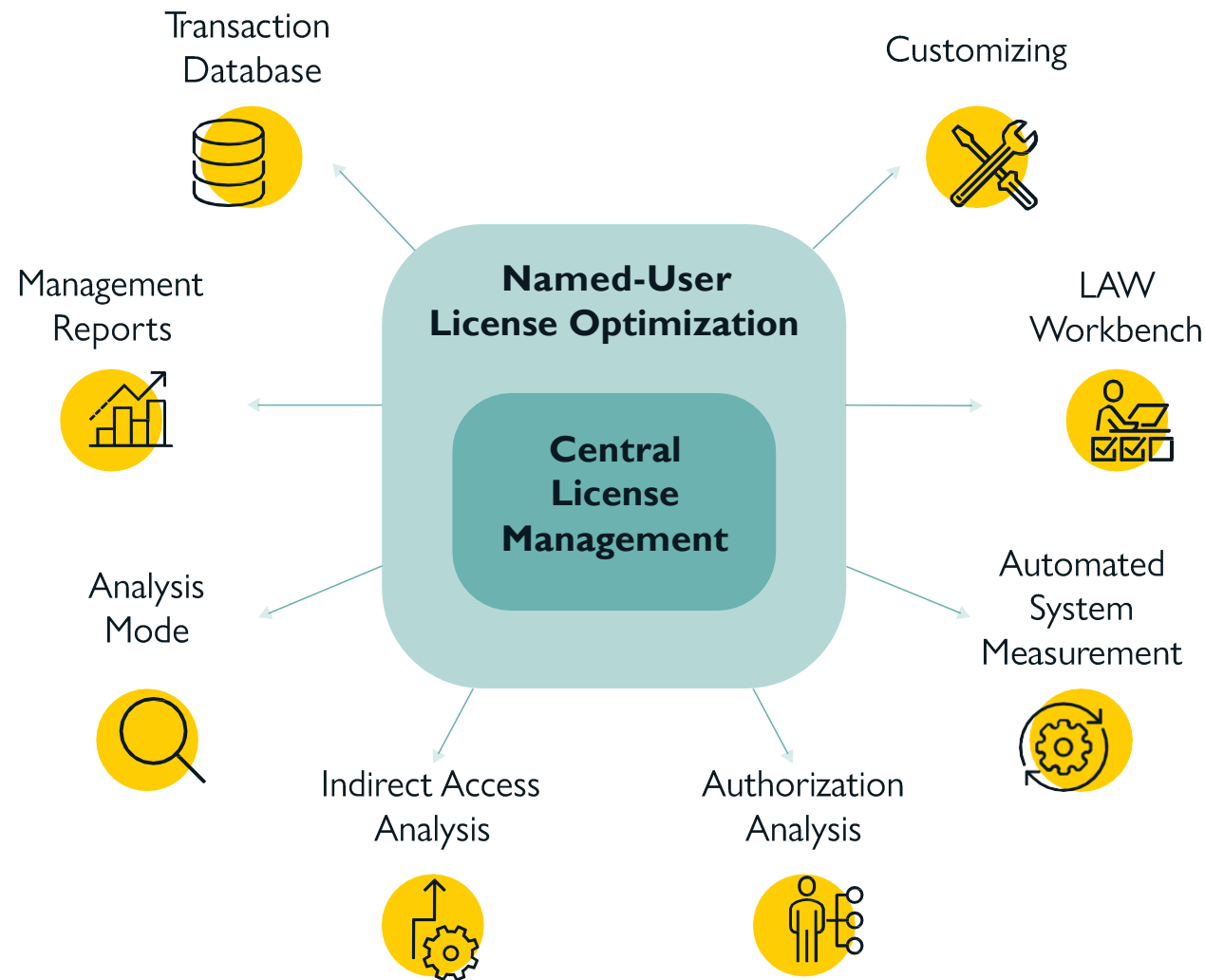


Figure 2: samQ features

samQ is programmed in ABAP and installed as an SAP add-on on a central NetWeaver system connected via standard RFC connections to the systems that shall be measured. No software is installed on production SAP systems.

The heart of samQ is a transactional database. VOQUZ provides the database with a collection of all the standard transactions that can be run in SAP. The database can be expanded to include customer-specific license definitions as well as individual Z and Y transactions, and it includes the most common SAP add-ons. The transactional database is constantly expanded and updated to include new transactions. Consequently, samQ is the only dynamic tool on the market for SAP software asset management solutions.

SAP License Management: Act Now!

← samQ License Optimizer for SAP gives you full control of your SAP license management. Usage-based license distribution keeps you fully prepared for annual system measurement at all times – without requiring you to classify users manually. It consolidates double or inactive users and identifies unused licenses. Furthermore, samQ detects possible cases of indirect access, which you can then check and license proactively, as required.

Thanks to a range of analysis functions, you can test different configurations and licensing scenarios to determine your best possible strategy. The optional Fiori dashboard displays the most important licensing information and sends out alert notifications when critical states are reached. That means you can always keep an eye on package and engine usage and recognize trends in license usage at an early stage.



Benefits at a Glance



Transparent licensing on a usage basis and full SAP software license compliance



Avoidance of costly over- and under-licensing



Targeted (additional) purchasing of optimal license types in exactly the right quantity



Automatic assignment of licenses reduces manual effort by up to 80 percent



Identification of indirect access



Cost savings thanks to optimal license distribution and possible use of alternative, less expensive licenses



More negotiation power when dealing with SAP



About VOQUZ Labs



VOQUZ Labs is a sub-division of the larger VOQUZ Group and the leading provider of Software Asset Management (SAM) and Authorization Management (GRC) add-ons for SAP, with bases in Berlin, New York and Mexico City. VOQUZ Labs combines best-in-class SAP user management solutions and a strong consulting expertise in license advisory, compliance, security, access control and efficient user management.

labs@voquz.com

www.voquzlabs.com

USA

P +1 917 818-2932

Mexico

P +52 55 41707695

Germany

P +49 89 925191-0

iOCO

VOQUZ
Labs

Detailed Features



Central license management

samQ facilitates central management of all SAP user licenses. There is no need to edit user profiles in each individual system. Instead, samQ enables information to be updated across all connected SAP systems. samQ identifies inactive SAP users and deactivates their accounts. Double user accounts are consolidated so that every SAP user has exactly one named user license across all SAP systems. The licenses freed in the process eliminate the need to purchase new ones and enable you to reassign unused licenses.



Named-user license optimization

samQ thoroughly analyzes the usage data of all individual SAP users and determines who uses SAP in which way. The transaction data is used to determine the optimal license type. samQ automatically recognizes changes in users' usage behavior that would be difficult to detect without a software tool, and it modifies the licenses accordingly. This permanently ensures that your licensing status is always as low as possible.



Transaction database

samQ uses a dynamic transaction database known as the Optimization Engine to determine the optimal license types. It contains all the transactions executable in SAP that were evaluated with a specific named-user license type. The transaction database is constantly modified, expanded and updated to include new transactions, for example, when SAP makes changes to its price and condition lists. samQ checks the usage data collected for individual users against the transactional database and automatically switches to the correct type of license if the current license does not suit their usage behavior.





Detailed Features (continued)



Customizing

samQ enables customers to take into account all the details from company-specific SAP contracts in order to create a precise model of their business conditions. An extensive range of customizing options are available to the client for this purpose. For example, prices and conditions, ratio-based rules (ratio of professional to limited professional user licenses), special licenses, transaction evaluations for customer-specific transactions and more can all be precisely configured. This information provides a framework for optimizing the SAP licenses.



Management reports based on SAP Fiori

samQ versions 2.0 and later offer a special Fiori dashboard for a quick overview. Tables provide the most important licensing information and KPIs, while charts show trends in license usage. Alerts warn the user when a critical state has been reached. The Fiori add-on also makes it possible to use samQ on mobile devices, such as tablets.



Automatic System Measurement

The optional module helps users conduct the annual system measurement. It automates both engine and user measurement centrally across all systems from a single point. Engine measurement makes it possible to generate and save full USMM reports. In the process, samQ saves the date stamped USMM measurement results (full result logs) and makes them available at all times for all kinds of evaluations. This module is especially useful for monitoring engine usage.

Detailed Features (continued)



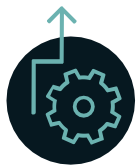
LAW Workbench

This module makes it very easy for you to check the results of your LAW reports. samQ compares your calculations with the LAW results, identifies any deviations and enables a drilldown all the way to the user/client level. Consequently, you can always be sure that the reported results match your calculations.



Analysis mode and 'What-if' scenarios

Evaluations can be run in samQ with fully customized settings without changing existing customized settings or deactivating daily optimization. samQ offers a variety of license templates for this purpose. Advantageous configurations can be saved or used directly in customized settings, as required. This makes it possible to develop scenarios that factor in license types that are not yet part of the customer's license inventory.



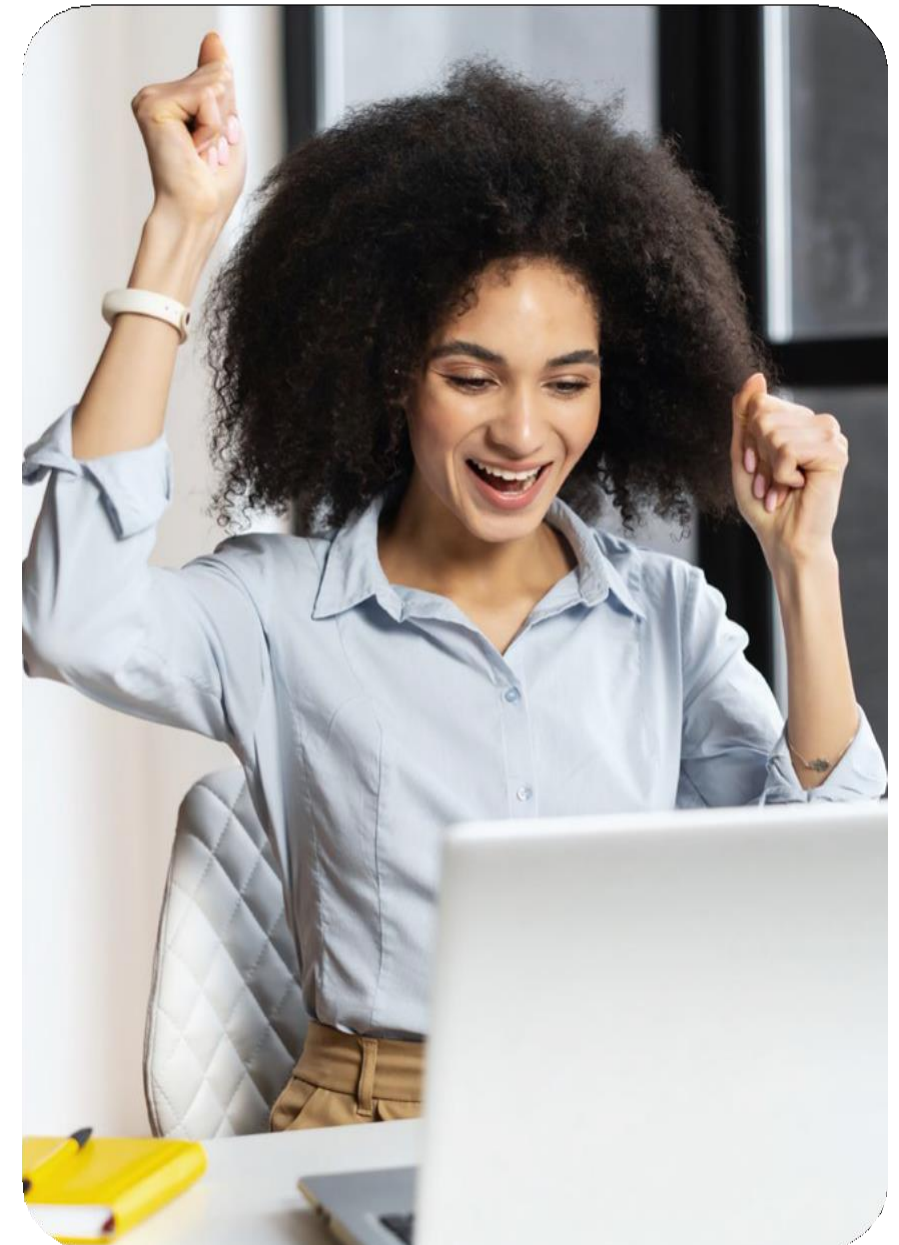
Indirect Access Analysis

With samQ you can find out which third-party systems and add-ons access your SAP data. samQ automatically analyzes all RFC connections and the data exchanged over them. It evaluates the interfaces to determine actual usage and identifies critical situations based on this information. As a result, you receive a regularly updated risk overview that serves as a basis for further evaluations.



Authorization Analysis

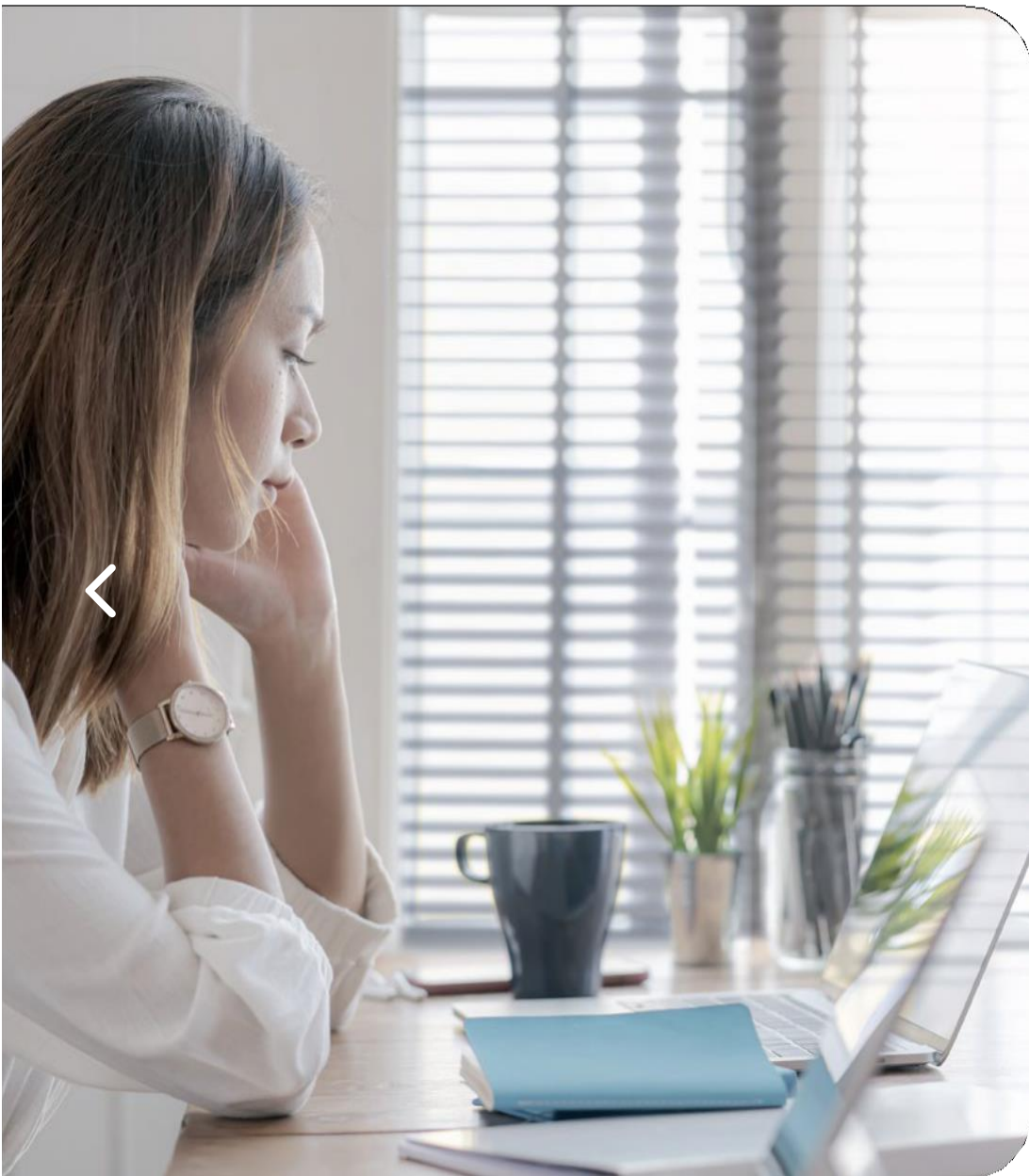
To determine the correct named-user license based on authorizations or to optimize your role and authorization concept, samQ provides a special module for authorization analysis. samQ calculates the license key a user is assigned with if licenses are distributed according to authorizations rather than real activities. The analysis provides transparency about the different license calculations and determines which permissions or transactions are unused.



Feature List

License optimization

- Automatic license optimization of all SAP systems centrally from samQ (SolutionManager or similar)
- Automatic daily license check for compliance with automatic adjustments if necessary
- Automatic license update, in case of change in usage behavior
- Automatic user deactivation in case of inactivity
- Automatic assignment of multiple licenses if required by the SAP contract
- Automatic validation per user for their required license
- Automatic selection of the favorable license in the SAP system, if several license types are possible
- Automatic switch of licenses from usage to authorization and back again
- All standard licenses available
- All special licenses can be mapped by customizing
- General templates exist in samQ for each standard license from the PKLs
- Preparation and automatic data validation for LAW measurement (LAW snapshot)
- Automatic replenishment of surplus licenses in license groups where there is still potential

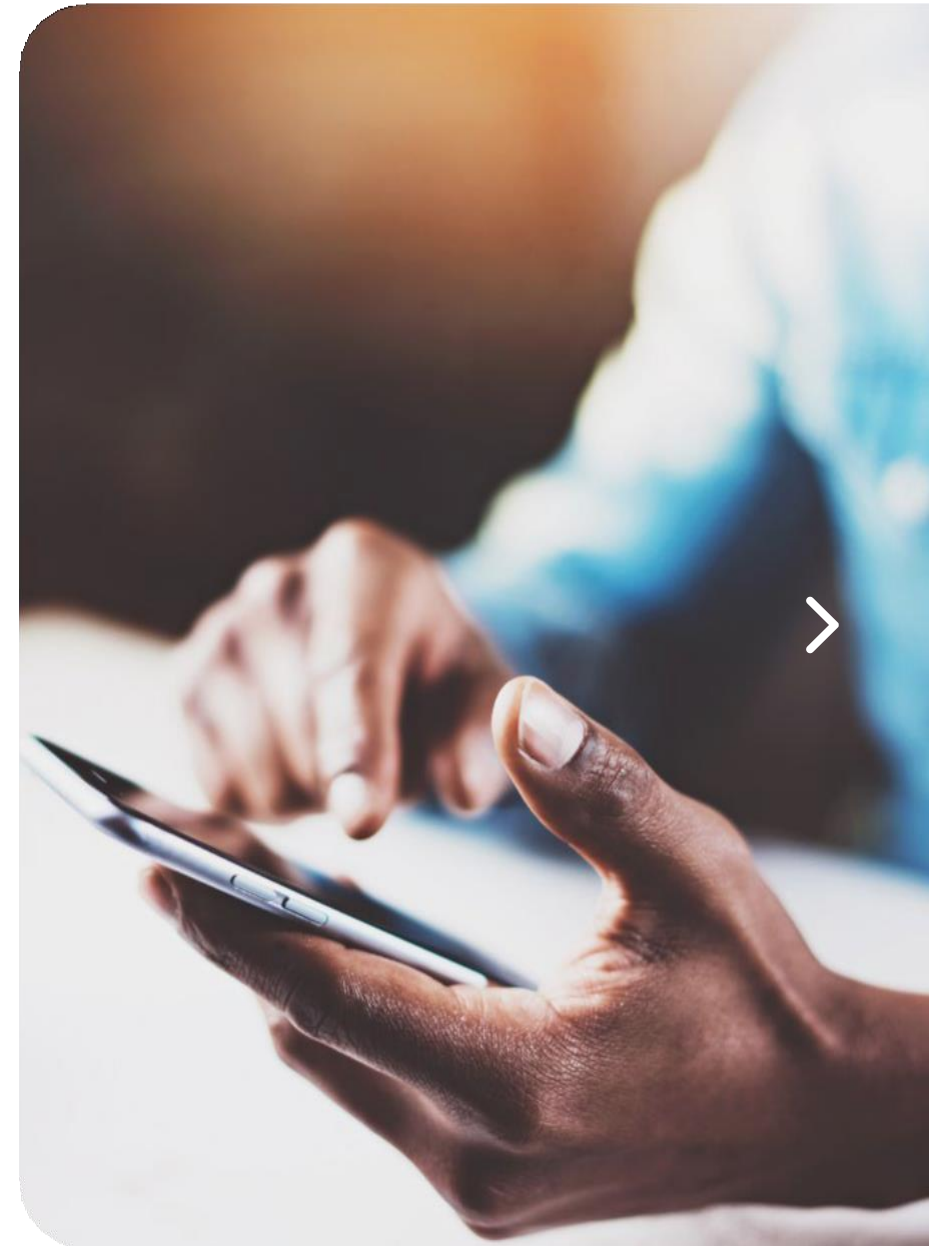


Customization

- Standard licenses in samQ completely included as templates
- New S/4HANA license types completely included in samQ as templates
- Terms of use can be customized and are used automatically
 - historical observation period for the license determination
 - time span for user deactivation
 - time span to deactivate developers if no developer activities are present
- Grouping of users from different systems via arbitrarily selectable SU01 fields, far beyond the LAW options
- Automatic user exclusion of license optimization or user optimization, if necessary
- Integration or exclusion of technical users in license optimization

Collectors

- Collector for used module components
- Collector for the gathering of all relevant usage values of the engines
- Collector for identification of who used which module components
- Collector for gathering transaction groups (e.g., Z and Y transactions)
- Collector for modification vouchers
- Collector for optimization data for optimization possibilities outside samQ
- Collector for the gathering of data for indirect access
- Collector for role contents of all users and their roles
- Fall back process for undoing license optimizations
- Automatic collection of new customer code transactions
- Automatic collection of unknown standard transactions
- Automatic collection of newly added users
- Automatic exclusion of SAP users who are no longer active in the company
- Automatic collection of new transactions used by users





Reports

- License distribution report with drilldown options at user and activity level
- Report on consumed material values from engine measurement
- Report on indirect access
- Report on all users in all SAP systems with logon data, license, status, etc.
- Report for determining license change histories
- Report on license change frequencies
- Usage reports of transactions and module components to individual users or user groups in the SAP systems
- Comparison report on which role contents are used and which are not



Collectors

- Comparison report for LAW consolidation on correctness of validation results
- Reports on usage frequencies of transaction groups (e.g. Z and Y transactions)
- Automatic recognition of user groups that belong to a certain license type through their activities/authorizations

Determinable data

- By switching to the analysis mode, every conceivable license usage can be simulated
- Determination of all SAP add-ons used
- Provision of prepared raw data for indirect access
- Determination of third-party application usage data
- Determination of used and necessary third-party licenses
- Identification of incorrectly licensed technical users





Tables (all downloadable)

- Tables about all used transactions, reports and programs
- Tables for all user details from the SU01 fields, cross-system
- Tables about engine consumption values
- Tables about user license consolidation
- Table of inactive developers
- Tables for the entire existing customizing system
- Tables about ignorable transactions, reports and programs
- Tables about newly added transactions
- Tables about the complete current license distribution



◀ samQ License Optimizer for SAP

Connect with us

Info.ch@iOCO.tech

iOCO

VOQUZ
Labs